

# SENTINEL™

Meter Management System



## Sentinel™ Meter Management System



### Key features:

- Browser driven application
- Secure web interface
- Supports both wireless single space and multi space meters
- Allows for remote monitoring of key components for maintenance purposes
- MAP Display allows for geographic searches and reporting of meters
- Choose from a variety of pre-designed reports for transaction and audit data
- Provides an interface to export data to other applications including Microsoft® Excel® or Adobe® Reader®
- Role based user access
- Remote Alert Notification for quick communication of meter alarms
- Maintenance tickets to assign tasks online and manage your resources better
- Tariff editor allows administrator the ability to change meter rates remotely
- Pay by Space and Pay by Plate enforcement reports that are viewable from any Internet enabled device, including cell phones
- Flexible packages for basic and advanced user needs

<over for specifications>



Customizable Dashboard



Interactive MAP Display



Multiple Reporting Options



Real Time Alert Tools

### System Administration

The system administration feature gives the administrator control over the set up and specifications of the meters. Features include:

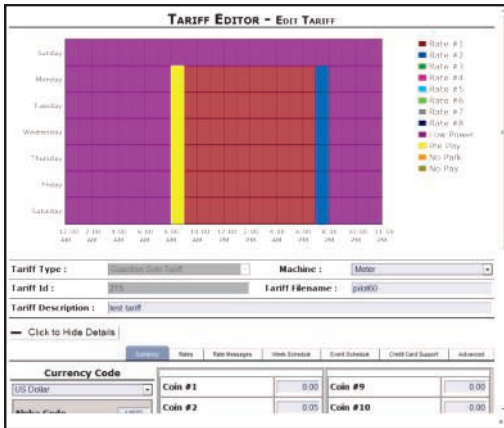
- Display Configuration for Single Space Meters
- Dashboard Configuration
- Alert Codes
- Add User to Sentinel™ Meter Management System (MMS)
- View / Edit Users

### Email Management

Allows administrator to decide which users will be notified when alerts happen from single space wireless meters or from multi space meters.

### Rate / Tariff Management

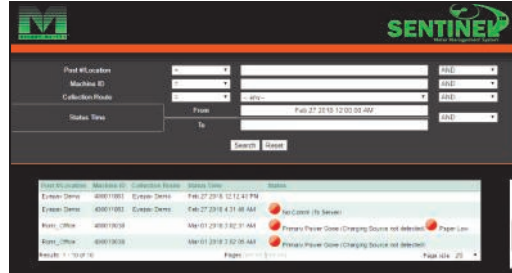
Allows administrator to build, modify and deploy rate/tariff files remotely to the wireless single space and multi space meters. Rates can be sent to a single meter or to a group of meters.



### Meter / Post Management

In Meter Management, users can view each individual meter and see the Unit Info, Status and location for each. From this menu, detailed histories, reports, and maintenance tickets can be viewed or assigned. Features include:

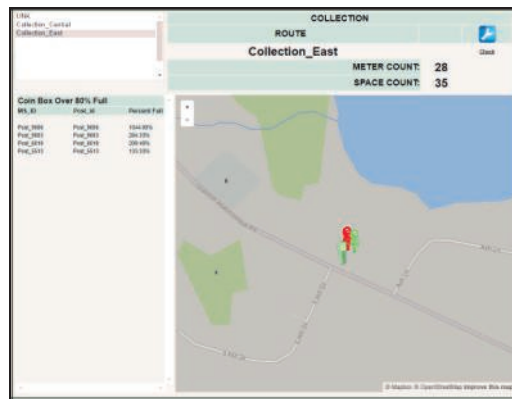
- Add / View Meters (single space and multi space)
- Add / View Zones (for grouping meters)
- Add / View Inventory (meters not yet deployed)
- View transaction reports, occupancy reports, audit reports, reconciliation reports
- View alert history and maintenance history



### MAP Display

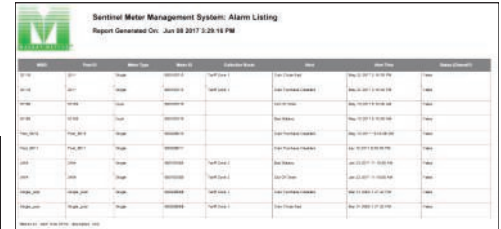
With the MAP display feature, the user can search for a specific meter or a group of meters using the digital map interface. Each meter is represented by an icon that can be selected to show detailed meter information. Display the meters in a traditional mapping view or switch to the satellite photo for a bird's eye view. Features include:

- Launch MAP Display
- Add Location (map coordinates for displaying meters on digital maps)
- View Locations (edit map coordinates)



### Current Alarms

The Current Alarms application provides an up-to-date report on any alerts that have been sent from the meters to Sentinel™ MMS. The report lists the alerts currently active along with a graphic breakdown of the types of alerts. A hyperlink takes the user to a detailed report with links to the meters requiring attention.



### System Status

The System Status report features several reports designed to alert the user of silent meters. Silent meters cannot communicate alerts to Sentinel™ MMS due to communication problems. Reports include:

- Silent Listing
- Meter Call-in
- 24 Hour Zero Revenue



### Resource Management

Control of resources at a glance by providing a place to add and manage resources such as collections, maintenance and enforcement. In resource management, the administrator can assign jobs to particular resources and also view a list of active and completed assignments. Features include:

- Add Resource
- Manage Resource
- Add Maintenance Code
- View / Edit Maintenance Codes
- View Maintenance Tickets

### Pay by Space / Pay By Plate

The Pay by Space and Pay by Plate applications allow users who have pay stations in those configurations to setup, view and enforce parking using Sentinel™ MMS. A mobile app is also available for enforcement.

